

FINAL ANNOUNCEMENT AND CALL FOR PAPERS
(MARCH, 2011)

**FIFTH INTERNATIONAL SYMPOSIUM
ON GIS/SPATIAL ANALYSES
IN FISHERY AND AQUATIC SCIENCES**



**WELLINGTON, NEW ZEALAND
AUGUST 22(MON)-26(FRI), 2011**



Department of Conservation
Te Papa Atawhai

**Deadline for the registration and
submission of abstract is May 30, 2011**

*Please distribute this announcement to your colleagues or friends
who might be interested in participating in this Symposium.*

CONTENTS

[BACKGROUND]	03-06
[OBJECTIVES]	06
[THEMES]	06-09
[PARTICIPATION]	09
[PRESENTATION OF PAPERS]	09
[SUBJECTS COVERED]	10
[KEYNOTE SPEAKERS & MODERATORS]	11
[LANGUAGE]	11
[AWARDS FOR BEST PRESENTATIONS]	11
[OUTLINE OF THE SYMPOSIUM PROGRAM]	11
[SUBMISSION OF ABSTRACTS]	12
[HELP FOR PUBLICITY OF THE SYMPOSIUM]	13
[PUBLICATION OF PROCEEDINGS(*)]	13
[CALL FOR ADVERTISEMENTS]	14
[EXCURSION]	14
[REGISTRATION]	15
[REGISTRATION FEES]	16-17
[CANCELLATION POLICY]	17
[SCHEDULE (DEADLINES & IMPORTANT DATES)]	17
[ACCOMMODATION (HOTEL RESERVATION)]	18
[VISA INFORMATION]	19
[ORGANIZER AND CONVENER]	20
[LOCAL CO-ORGANIZER]	20
[SUPPORTING ORGANIZATION]	21
[SUPPORTING MEMBERS]	22
[FUTURE SYMPOSIA]	23
[PUBLICATIONS]	23-24
[CONTACT POINTS AND DIRECTIONS]	27
[WELLINGTON CENTRAL CITY MAP]	28

NOTE (1) (*) "GIS/SPATIAL ANALYSES IN FISHERY AND AQUATIC SCIENCES (VOLUME 5)"

(2) Wellington photographs in this announcement are by courtesy of "Positively Wellington Tourism".

DEAR COLLEAGUES,

We are pleased to announce the 'Fifth International Symposium on GIS/ Spatial Analyses in Fishery and Aquatic Sciences'. Its general theme is the same as in the past four Symposia, i.e., to emphasize GIS as a tool for conducting spatial analyses in aquatic sciences, which encompasses the ecosystem approach to fisheries management and the interrelationships between inland and marine fisheries and aquaculture, and the aquatic and terrestrial environments in which the activities take place.

[BACKGROUND]

Applications of spatial analyses using GIS in fishery and aquatic sciences have lagged behind those used in terrestrial sciences. However, from the last decade of the 20th century to the present, GIS has rapidly become a powerful tool for spatial analyses in aquatic environments, as evidenced by the papers presented in the past four Symposia. There have also been local, regional and national GIS workshops and meetings on various topics in fishery and aquatic sciences including: fisheries oceanography, aquaculture, satellite remote sensing, inland fisheries, fisheries management, spatial numerical analyses, etc. However, the opportunity to share experiences in these developments and applications at a global level has been limited.

For this reason, the inaugural 'First International Symposium on GIS in Fishery Science' was held in Seattle, Washington, USA in 1999. It was co-organized by the National Marine Fisheries Service (NMFS) and the 'Fishery GIS Research Group (Saitama, Japan)' (*) and was quite successful, with 230 presentations (131 orals, 89 posters and 10 GIS software demonstrations).

The Second Symposium was held at the University of Sussex in Brighton, England, U.K. in 2002, and was co-organized by the International Fishery GIS Society and Dr Geoff Meaden (keynote speaker of the First Symposium), from the Fisheries GIS Unit, Department of Geography, Canterbury Christ Church University, Canterbury, UK. It was also successful, with 96 presentations (67 orals, 23 posters and 6 GIS system related demonstrations).

The Third Symposium took place in Asia at the Shanghai Fisheries University in China in 2005 and it was co-organized by the International Fishery GIS Society and Professor/Dean LiuXiong Xu, Department of Marine Fisheries Sciences and Technologies, Shanghai Fisheries University. It was fruitful with many Asian participants and with 70 presentations (47 orals, 15 posters and 8 GIS system related demonstrations).

(*) *Its name has been changed to 'International Fishery GIS Society' in 2009 to represent more than 6,000 members in the world covering broad subjects in fishery and aquatic sciences.*



*Group photo
(Second Symposium at the University of Sussex in Brighton, England, U.K. in 2002)*



*Group photo
(Third Symposium at the Shanghai Fisheries University, China in 2005)*

The Fourth Symposium took place in South America at the Universidade Santa Úrsula in Rio de Janeiro, Brazil with the local co-organizer, Dr Philip Conrad Scott, Instituto de Ciências Biológicas e Ambientais (Institute of Biological and Environmental Sciences). It was very productive especially from many Brazilian participants with total of 99 presentations (71 orals, 16 posters and 12 PC demos, i.e., GIS system related demonstrations).



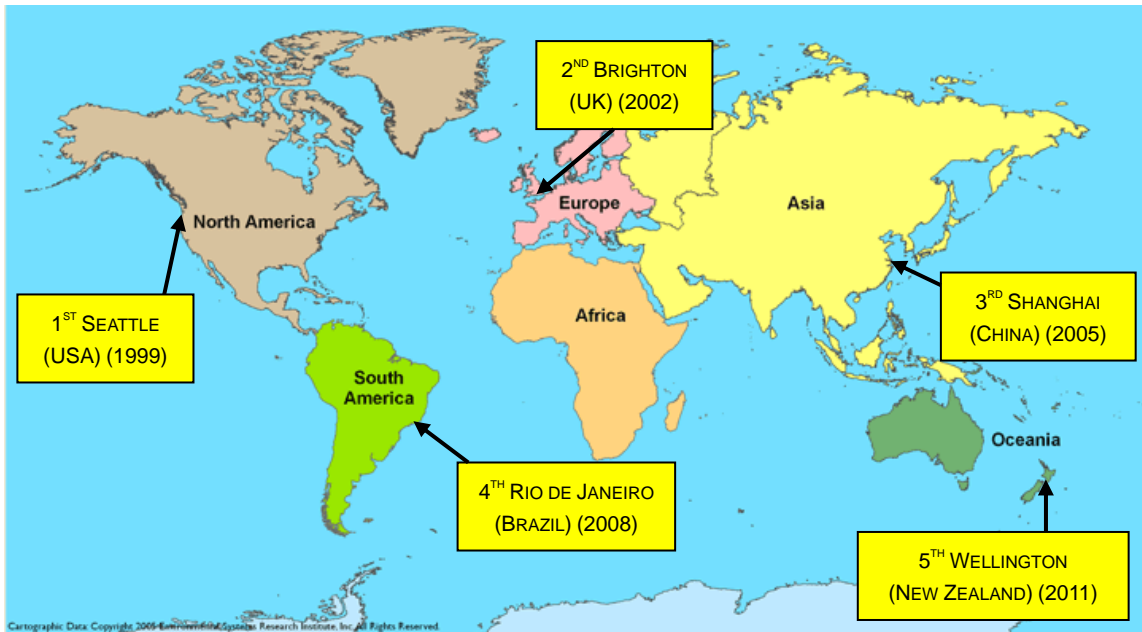
Group photo

*(Fourth Symposium at the Universidade Santa Úrsula,
Rio de Janeiro, Brazil in 2008)*

These four global fishery and aquatic GIS conferences have generated interest world-wide and there has subsequently been strong interest in demonstrating new and further developments. In the three years since the fourth Symposium, it is apparent that there has been significant progress in GIS/spatial analyses in fishery and aquatic sciences. Hence, we encourage your participation in the Fifth Symposium to present new ideas or to share updates on your spatial research using GIS or on other GIS-related issues such as remote sensing, software development, computer hardware, education and reviews.

This is the '**FIRST ANNOUNCEMENT AND CALL FOR PAPERS**' for the 'Fifth International Symposium on GIS/Spatial Analyses in Fishery and Aquatic Sciences'. The 'International Fishery GIS Society' will again be the main organizer and the venue of the Fifth Symposium will be Wellington, New Zealand with the local co-organizers, **Mr Brent Wood** and **Ms Frances Nolan**, National Institute of Water and Atmospheric Research (NIWA) and Silverstripe <http://www.silverstripe.com>.

Locations of venues in the past symposia and the one for the 5th symposium are depicted in the map (next page).



LOCATIONS OF VENUES IN THE PAST SYMPOSIA AND THE NEXT (5TH) SYMPOSIUM

[OBJECTIVES]

The primary objectives of the Fifth Symposium are the same as in the past i.e.,

- *To highlight developments and applications of GIS/Spatial analyses in Fishery and Aquatic Sciences;*
- *To exchange ideas and information; and*
- *To suggest further improvements, techniques and applications of GIS/Spatial analyses in Fishery and Aquatic Sciences.*

[THEMES]

(1) First Symposium

At the first two Symposia, there has been a single theme in order to highlight and strengthen that area of fishery GIS (see Table 1, page 9). “GIS software” was the major theme of the First Symposium in 1999. GIS was becoming an essential tool for spatial analysis of fisheries data and various GIS software programs were either being developed or adapted for these analyses. The First Symposium provided a forum to showcase these GIS software applications.

(2) Second Symposium

Following the First Symposium, we observed the development of basic quantitative spatial analyses using GIS; however, quantitative GIS applications and linkages to stock assessment, resources management, population estimation, geostatistics, forecasting,

contour estimation, etc., were not well established or developed. Thus, the theme at the Second Symposium in 2002 was "Spatial Numerical Analyses".

(3) Third Symposium

Three themes were established for the Third Symposium in 2005. The first was "Effective and Affordable GIS for Fishery and Aquatic Information," especially for the developing countries. Our intention was to encourage participation by people from developing countries and to demonstrate how GIS could be used by those in these countries.

The second theme was "Spatial Fish Stock Assessment Modeling." "At the 1st Symposium there were several papers showing the development of GIS (space-based) production models and Virtual Population Analyses (VPA's) – these were exciting topics." Indeed there have been many geostatistics-related papers in the past Symposia.

The third theme was "Spatial Fisheries Resource Management." Fisheries managers, not only in the developed countries but also in the developing countries, are gradually adopting GIS-based systems, along with GPS, VMS, satellites, electronic log books, etc., and integrating these into their organizations to manage fisheries resources. As a result this topic was extremely useful for government officials, engineers, GIS system developers, and scientists to help them learn about and exchange information on recent developments and technologies.

(4) Fourth Symposium

In the fourth symposium there were also three themes as follows:

Inland Water and Aquaculture GIS: In the previous three symposia a predominance of marine related presentations, including marine aquaculture was observed. In view of the importance of future food securement from freshwater sources including aquaculture, the Third symposium's final suggestions included the promotion of this area in the Fourth Symposium.

Ecosystem Management: This was 'the' hot topic world-wide in both fisheries and aquaculture. The effective implementation of environmental management using geo-technologies including GIS, Remote Sensing (RS), Global Positioning System (GPS), Vessel Monitoring Systems (VMS) was becoming a reality. FAO has developed an "Ecosystem Approach to Fisheries (EAF)" and currently was working on an "Ecosystem Approach to Aquaculture (EAA)". These and other relevant topics including "Spatial Planning", "Marine Protected Areas (MPA)", "Global Warming", "Biodiversity" and "Spatial Conservation and Management" were discussed in the Symposium.

Future GIS: This broad theme intended to offer symposium participants a chance to look at the current challenges and frontiers in GIS technologies including "Development of 3D and 4D applications", "Web-GIS (multi-user and multi-function information management systems)" and "GIS for all (GIS Education and Capacity Building)" as well as other relevant topics.

(5) Fifth Symposium

Global fish consumption have just hit a record high, fish are now the most traded food commodity (\$102 billion in 2008), and the use of GIS is still growing exponentially. Our panel^(*) on theme selection decided the following five themes by considering these facts and also proposals made by 9 different experts world-wide, in response to our calls for themes in the 1st announcement of the 5th Symposium, i.e., Professor (Brazil), Spatial data manager (New Zealand), Scientist (France), Researcher (New Zealand), Scientist (Brazil), GIS expert (New Zealand), GIS expert (Thailand), Scientist (Bangladesh) and Scientist (Germany) (by the order of the proposed date).

Integrating fisheries or aquaculture into Inland or Marine Spatial Planning:

Many countries are now realizing that, as well as managing and planning their terrestrial areas, the use of their marine space and their lakes and rivers needs to be carefully managed if all the competing uses are to be sustained. So Marine Spatial Planning is being adopted. It will be essential that both fisheries and aquacultural activities fit into these plans; GIS is certain to be the main tool if plans are to be successful.

Introducing social or economic factors into Ecosystems Approaches to Fisheries or Aquaculture:

Although the 4th Symposium looked at the topic of Ecosystems Management and Ecosystems Approaches to Fisheries (EAF) and to Aquaculture (EAA), it is increasingly clear that factors relating to social and to economic considerations of EAF or EAA are proving difficult to integrate, even with the help of GIS. We are therefore keen to see examples showing how these considerations may have been successfully adopted.

Climate Change effects on aquatic regimes, fisheries and aquaculture:

People researching any aspects of Climate Change will be well aware that the warming associated with this is leading to shifts in the normal distributions of all biological species. Aquatic environments generally make species movements particularly easy to accomplish. Is GIS already being used to monitor existing fish regime changes and/or to predict likely future species distributions given certain predicted temperature changes?

The integration of GIS with other disciplines or digital tools to aid fisheries or aquaculture:

We suspect that most GIS work carried out world-wide will simply download required data into a database management system and then use this data in a proprietary GIS. But there are huge opportunities to link the data and GIS to other forms of software, or to integrate GIS into other disciplines, and our audience deserves to see examples of the success and variety of such linkages.

Data access and data sharing in fisheries or aquaculture GIS projects:

We are all well aware of the huge proliferation in digital data, and indeed for some of us this may be overwhelming in terms of quantity, sources and formats. It would be most useful to hear how GIS users have best coped with sourcing their data, and what have been the opportunities and advantages to sharing data.

(*) Jose Aguilar-Manjarrez (Mexico), Fabio Carroci (Italy), Jim Kapetsky (USA), Geoff Meaden (UK), Vasilis Valavanis (Greece) and Brent Woods (New Zealand) (by the order of the last name).

Table 1. Summary of themes in the past Symposia and the forthcoming 5th symposium

Symposium	Themes
First Symposium (1999)	<ul style="list-style-type: none"> ● GIS Software
Second Symposium (2002)	<ul style="list-style-type: none"> ● Spatial Numerical Analyses
Third Symposium (2005)	<ul style="list-style-type: none"> ● Effective and Affordable GIS for Fishery and Aquatic Information (especially for the people in the developing countries) ● Spatial Fish Stock Assessment Modeling ● Spatial Fisheries Resource Management
Fourth Symposium (2008)	<ul style="list-style-type: none"> ● Inland Water and Aquaculture GIS ● Ecosystem Management ● Future GIS
Fifth Symposium (2011)	<ul style="list-style-type: none"> ● Integrating Spatial Planning ● Introducing social or economic factors into Ecosystems Approaches ● Climate Change effects ● The integration of GIS with other disciplines or digital tools ● Data access and data sharing in GIS projects

[PARTICIPATION]

Participation from a broad audience representing GIS/Spatial analyses in Fishery and Aquatic Sciences is encouraged, i.e., scientists, students, computer experts (developers or engineers), managers (government officials), administrators, educators and others.

[PRESENTATION OF PAPERS]

For participants who wish to present their work, there are three ways, i.e., by **oral presentation**, **poster presentation** or **PC based demonstration** of GIS software, hardware and related systems. Duration of oral presentations will depend on number of presenters, but we tentatively set them for **20 minutes** (15 minutes for presentation and 5 minutes for questions and answers). For poster presentations and PC demonstrations, particular sessions will be set up. The final duration of oral presentations and details of poster and PC demonstrations will be informed in the final announcement to be circulated by April, 2011.



[SUBJECTS COVERED]

The Symposium will cover spatial analyses using GIS or GIS related topics in Fishery and Aquatic Sciences. Within this there are three main categories:

- [A] Marine related subjects;
- [B] Freshwater, Inland or Brackish-water related subjects; and
- [C] Other subjects.

Each of these three main categories may include a variety of sub-topics as follows:

[A] MARINE RELATED SUBJECTS

- (1) Habitats
- (2) Fisheries
- (3) Fishery Oceanography, Marine Ecosystems or Ecology
- (4) Remote Sensing and/or Acoustic Survey
- (5) Marine Resources Analysis and Management
- (6) Geostatistics, Forecasting and Modelling
- (7) Mariculture
- (8) Artificial Reefs and Marine Protected Areas (MPA's)
- (9) Others (specify for registration)

[B] FRESHWATER, INLAND OR BRACKISH-WATER RELATED SUBJECTS (INCLUDING WATERSHED AND ESTUARY)

- (1) Habitats
- (2) Fisheries
- (3) Estuarine, Lacustrine and Riverine Ecosystems or Ecology
- (4) Remote Sensing and Aquatic Surveys
- (5) Resources Analysis and Management
- (6) Forecasting, Geostatistics or Modelling
- (7) Aquaculture
- (8) Others (specify for registration)

[C] OTHERS

- (1) Theory, Concepts or General Topics
- (2) Demonstration of GIS related Software, Database, Hardware or Systems using Computers
- (3) Education
- (4) Reviews
- (5) Others (specify for registration)

[KEYNOTE SPEAKERS AND MODERATORS]

Keynote speakers and moderators for each session will be determined and informed later.

[LANGUAGE]

We use only English for communications, presentations, abstracts, full papers and all the other relevant matters on the Symposium. For presenters, please speak slowly and clearly as more than 50% of the participants have been non-native English speakers in the past.

[AWARDS FOR BEST PRESENTATIONS]

We plan to give awards to the best presentations (orals and posters). Details will be provided later.

[OUTLINE OF THE SYMPOSIUM PROGRAM](*)

Table 2. Outline of the Fifth symposium schedule.

August, 2011	Events and Activities	Social events	Registration (**)
22 (Mon)	<ul style="list-style-type: none"> ● Openings and key note speeches ● Oral presentations (GIS system, concept and education) 	Traditional ice-breaking party	Registration at the reception desk in the
23 (Tue)	<ul style="list-style-type: none"> ● Presentations (Major topics will be covered by Orals, Posters and demonstrations of GIS software, system with PCs) 	Group photo	
24 (Wed)		Symposium dinner	
25 (Thu)			
26 (Fri) (morning)	<ul style="list-style-type: none"> ● Award ceremony for the best presentations ● Sum-up Session (Panel discussion) ● Closings 		Secretariat room (8:30-17:00) Daily

[Note (*)]

Those who don't have time to stay for 5 days, it is suggested you attend for 3 days from Aug. 23-25 as major papers will be presented in these 3 days.

[Note (**)] Registration at the reception desk

All the participants (normal, late and walk-in registrants) should FIRST go to the reception desk in the Secretariat room. You will get one envelop including the program, the abstract proceedings, your name card and other information. The walk-in registrants need to register and pay the registration fee. The reception desk will be open 8:30-17:00 everyday (Aug 22-26).

[SUBMISSION OF ABSTRACTS]

All presenters MUST submit an abstract by May 30, 2011. Abstracts submitted after this date will not be accepted due to the strict time constraint for producing the Symposium Program and the Abstract Proceedings. The Guidelines for submission of the abstract are stated in Box 1 (below). An Abstract Proceedings will be prepared and one copy will be provided for each participant at the registration desk in the Symposium. If you are interested in obtaining the Abstract Proceedings from the last four Symposia, please refer to the web site at http://www.esl.co.jp/Sympo/publication_May_2010_.pdf.

BOX 1

Guideline for Abstract Submission

(1) Format

Each abstract will be printed on a sheet of standard A4 paper. The abstract should not exceed 350 words. In the abstract, please include objectives, methods (including the GIS software name if applicable) and results. One color GIS Map or Figure can be also submitted (optional). The example of the abstract format is specified as follows:

(Format of the Abstract)

(Title) Guidelines for the Symposium on GIS in Fishery Sciences

(Authors) Yoko ONO ^{1/} and Brent Wood ^{2/}

1/ Professor, GIS Research Institute, Univ. of Hot Springs, Kyoto,
424-0091, Japan (yoko.ono@hot_spring.edu.jp)

2/ GIS expert, NIWA, Private Bag 14901, Kilbirnie, Wellington,
New Zealand (b.wood@niwa.co.nz)

(Key words) List by the alphabetical order, **Maximum 8 key words**

(Text of Abstract) **Not more than 350 words**

(2) Submission

Abstracts should be submitted by E-mail to the Secretariat of the International Fishery GIS Society at fish-gis@world.odn.ne.jp by May 30, 2011. The file format can be MS-WORD, WordPerfect or plain ASCII text including optional ONE color GIS map or Figure.

[HELP FOR PUBLICITY OF THIS SYMPOSIUM]

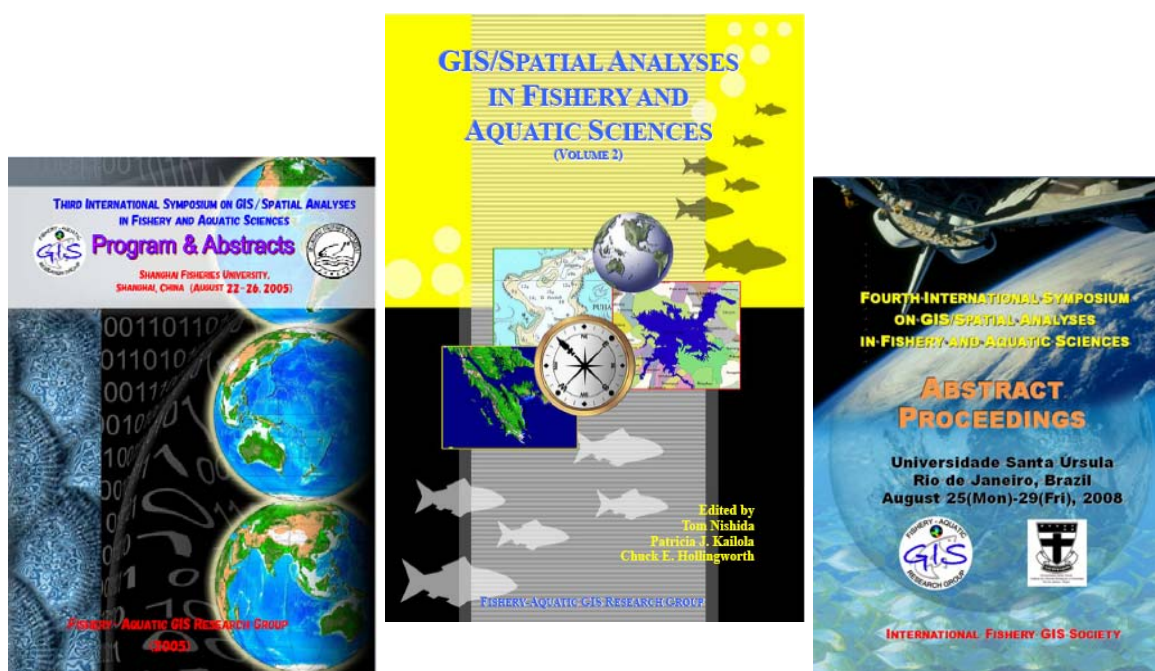
Please help to put this announcement in free listings, e.g. 'Fishing International', 'various GIS publications', etc. and/or to put it in the bulletin boards in research institutions, universities and other relevant outlets. Please also help to distribute this announcement to your colleagues or friends who might be interested in participating in this Symposium. We very much appreciate your kind help and cooperation in this.

[PUBLICATION OF PROCEEDINGS]

Those who make a presentation (oral, poster or PC demonstration) and who wish to submit a full paper for the Symposium Proceedings, to be published by the International Fishery GIS Society as **“GIS/SPATIAL ANALYSES IN FISHERY AND AQUATIC SCIENCES (VOLUME 5)”**, should send a full paper to the Secretariat of the International Fishery GIS Society at fish-gis@world.odn.ne.jp by **September 30, 2011**.

Papers will be peer reviewed by two referees. If the paper is then accepted, it will be checked by professional editors before formal publication. The Proceedings will be published in 2012 or later. **“Guidelines” for the full papers are available at** <http://www.esl.co.jp/Sympo/5th/Guidelines.pdf/>.

If you are interested in the Proceedings of the past Symposia and other publication, please refer to the web site at <http://www.esl.co.jp/Sympo/index.htm>.



ABSTRACT (3RD SYMPOSIUM)

PROCEEDINGS (2ND SYMPOSIUM)

ABSTRACT (4TH SYMPOSIUM)

[CALL FOR ADVERTISEMENTS]

If GIS related firms such as software and hardware developers are interested in putting their advertisements in our publications and E-mail circulations please contact the Secretariat of the International Fishery GIS Society by E-mail at fish-gis@world.odn.ne.jp. We will consult on details including the design, the cost etc. Please note we have more than 5,000 E-mail members in nearly 50 countries and 10 international organizations.

[EXCURSION]

No excursions are planned. However, it is easily possible for visitors to book onto excursions through webs and/or local travel agencies.



[REGISTRATION]

If you wish to participate in the Fifth Symposium, send the following information by E-mail to the Secretariat of the International Fishery GIS Society at fish-gis@world.odn.ne.jp. **Please make one registration per one person attending.**

- (a) Full name (first, middle and last: LAST NAME IN CAPITAL LETTERS);
- (b) Name of the organization that you belong to;
- (c) Your Post, and Position or Title;
- (d) Postal (mailing) address;
- (e) E-mail address;
- (f) Telephone number including country code;
- (g) FAX number including country code; and

If you intend to present a paper (including poster, exhibition and demonstration using PC or other devices), please also inform us of the following additional information. **(If you are making more than one presentation, please provide information on each separately).**

- (h) Title of your paper;
- (i) Names of the author and co-authors;
- (j) Subject of the paper: Select one from category specified in [SUBJECTS] above, for example, [B]-(3);
- (k) Name of the presenter; and
- (l) Specify the method of presentation, i.e., [Oral], [Poster], or [PC demo] (software/hardware demonstration with PC).

After you send the registration form by E-mail, you will get the registration number from the Secretariat. If you don't get the number in one week, please let us know by E-mail at fish-gis@world.odn.ne.jp.



[REGISTRATION FEES]

After you get your registration number, please pay the registration. When you send the registration fee, please indicate your registration number. Table 3 shows the summary of the registration fees.

Table 3. Summary of registration fees

Type	Payment Period	registration fees	Payment Method (See next page for details)
Normal registration fee	By May 30, 2011	US \$ 300	Checks or Credit cards
Late registration fee	After June 1, 2011	US \$ 500	
On-site (walk-in) registration fee	Aug. 22-26, 2011 (during the Symposium)		Checks, credit cards or cash

[NOTE]

- (1) *Registration fees will be used for administrative expenses, costs of the facilities, the wages of the part time assistants, printing costs for the abstract proceedings and other related & necessary expenses.*
- (2) *There are a limited number of the helper jobs during the Symposium such as the time keepers, microphone distributors, coffee-break helpers etc. If you are interested in such, please let us know when you register. Then registration fees will be waived only if you register (by May 30, 2011) and are selected. The priority for these positions will be for students and participants from developing countries.*



Methods of Payment

Visa, Master Card, American Express or JCB are accepted. Please inform us of your credit card name, its number and expiry date (year/month). For security reasons, please send these information by splitting it into a few separate E-mails to fish-gis@world.odn.ne.jp or send by FAX to 81(Japan)-49-241-2442 (international) or 049-241-2442 (within Japan) to the Secretariat of the International Fishery GIS Society.

Important notes:

- (1) For those who have informed of us their CR information in the past, you don't need to send again except if you have new information such as new expiry date and/or a new CR number, etc.
- (2) As Agencies of these credit card companies are based in Japan, they will use Japanese currency for the settlements. This means that you might pay less or vice versa depending upon the exchange rates between two dates, i.e., the date when the credit card agencies pay (settle) with the International Fishery GIS Society and the later date when these agencies charge (settle) with the payee (you)

[CANCELLATION POLICY]

If you wish to cancel your attendance after completing the registration, then you should inform the Secretariat by E-mail. If informed, 50% of the registration fee will be returned.

[SCHEDULE : DEADLINES AND IMPORTANT DATES]

Dates	Deadlines and important dates
May 30, 2011	Deadline for the normal registration Deadline for the abstract submission <i>Those who will present papers (including oral, posters and PC demonstration) MUST register and send the registration fee & ABSTRACT <u>by MAY 30, 2011</u>, otherwise, presentations will not be accepted.</i>
June 1-Aug. 26, 2011	Period of late or on-site (walk-in) registration
Aug. 22-26, 2011	5th Symposium
September 30, 2011	Deadline for the full papers for the Proceedings (GIS/Spatial analyses in Fishery and Aquatic Sciences) (Volume 5)
2012 or later	Publication of the Proceedings (GIS/Spatial analyses in Fishery and Aquatic Sciences) (Volume 5)

[ACCOMMODATION (HOTEL RESERVATION)]

The symposium will be held at the James Cook Hotel Grand Chancellor, Wellington and there are reserving rooms for attendees. To book one of these rooms, send e-mail at reservations04@jamescookhotel.co.nz or phone 0064 4 495 0279, quote group booking number: 1906.

Costs of rooms are:

Room type	Cost including GST (in New Zealand dollars)	Notes
Terrace or Lambton	\$195 per night	Room only
	\$210 per night	Includes breakfast for one

The James Cook hotel website is:

<http://www.ghihotels.com/HGC/James%20Cook%20Wellington/hotels.aspx>

(please do not book via web-site, book by e-mail the address stated above)

Other hotels near the venue are:

City Life Hotel

<http://www.heritagehotels.co.nz/citylife-wellington/>

Hotel Intercontinental

<http://www.intercontinental.com/intercontinental/en/gb/locations/wlggs?dp=true>

Alternatively there are various accommodation options in Wellington, from Backpackers to Hotels to Self Catered rooms, all within walking distance of the venue - the city is renowned for its compact size! Please see <http://www.wellingtonnz.com/accommodation>

[VISA INFORMATION]

If you are visiting for three months or less and are from one of the countries listed below, you do not need a visa:

Andorra	Argentina	Austria
Bahrain	Belgium	Brazil
Brunei	Bulgaria	Canada
Chile	Cyprus	Czech Republic
Denmark	Estonia*	Finland
France	Germany	Greece*****
Hong Kong**	Hungary	Iceland
Ireland	Israel	Italy
Japan	Korea (South)	Kuwait
Latvia*	Liechtenstein	Lithuania*
Luxembourg	Malaysia	Malta
Mexico	Monaco	Netherlands
Norway	Oman	Poland
Portugal***	Qatar	Romania
San Marino	Saudi Arabia	Singapore
Slovak Republic	Slovenia	South Africa
Spain	Sweden	Switzerland
Taiwan*****	United Arab Emirates	United States of America****
Uruguay	Vatican City	

* Visa waiver does not apply to people travelling on alien's (non-citizen's) passports issued by these countries.

** Residents of Hong Kong travelling on Hong Kong Special Administrative Region or British National (Overseas) passports.

*** Portuguese passport holders must also have the right to live permanently in Portugal.

**** Including nationals of the USA.

***** Greek passport holders whose passports were issued on and after 1 January 2006. (Greek passports issued before 1 January 2006 are not acceptable for travel after 1 January 2007.)

***** Permanent residents of Taiwan travelling on a Taiwanese passport.

United Kingdom

British citizens and other British passport holders who produce evidence of the right to reside permanently in the UK can visit for up to six months without a visitor visa.

Australia

Australian citizens and people who hold a current Australian permanent residence visa or a current Australian resident return visa do not need a New Zealand visitor visa to enter New Zealand.

If your country is not listed above please go to the following link for further information:
<http://www.immigration.govt.nz/migrant/stream/visit/visitors/process/default.htm>

[ORGANIZER AND CONVENER]

International Fishery GIS Society

(<http://www.esl.co.jp/Sympo/outline.htm>)

Dr Kiyoshi Itoh (Representative) and **Dr Tom Nishida** (Convener)

C/o Environmental Simulation Laboratory (<http://www.esl.co.jp/index.htm/>)

2F, Noble Building, 2-4-1 Arajuku-Cho, Kawagoe, Saitama, Japan 350-1124

E-mail: fish-gis@world.odn.ne.jp

Phone : 81(Japan)-(0 for domestic)-49-242-9262

Fax : 81(Japan)-(0 for domestic)-49-241-2442

[LOCAL CO-ORGANIZER]

Mr. Brent Wood

National Institute of Water and Atmospheric Research (NIWA) Ltd

Private Bag 14901, Kilbirnie, Wellington, New Zealand

Email: b.wood@niwa.co.nz

Phone : +64 (NZ) (4) 386-0300 (from within NZ: 04 386-0300)

Fax : +64 (NZ) (4) 386-0574 (from within NZ: 04 386-0574)

Ms Frances Nolan

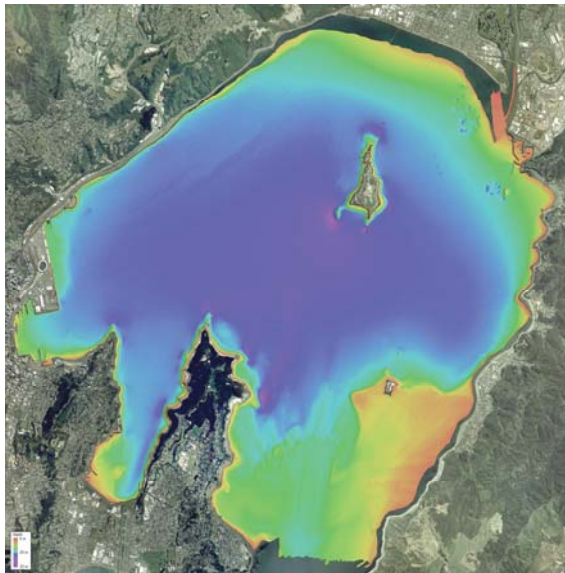
National Institute of Water and Atmospheric Research (NIWA) Ltd

Private Bag 14901, Kilbirnie, Wellington, New Zealand

Email: f.nolan@niwa.co.nz

Phone : +64 (NZ) (4) 386-0527 (from within NZ: 04 386-0527)

Fax : +64 (NZ) (4) 386-0574 (from within NZ: 04 386-0574)



**WELLINGTON HARBOUR SHOWING WATER DEPTH
BY THE NIWA'S MULTIBEAM ACOUSTIC SURVEY
(COURTESY OF MR BRENT WOOD, NIWA)**

[SUPPORTING ORGANIZATION]

American Fisheries Society (AFS)

Bill Fisher (President-Elect)

U. S. Geological Survey, New York Cooperative Fish and Wildlife Research Unit
and

Department of Natural Resources, Cornell University, Ithaca, NY 14853, USA

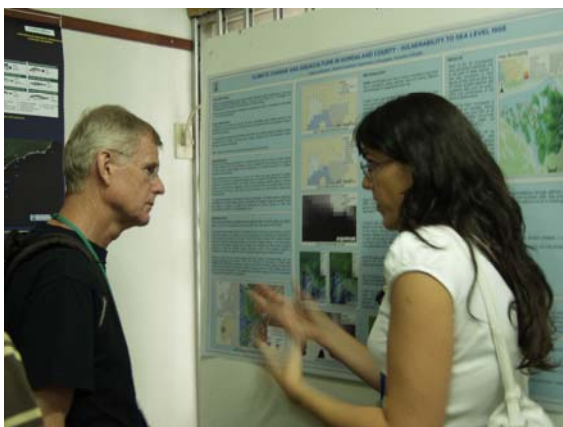
E-mail : william.fisher@cornell.edu

Phone : 1(USA)-607-255-2839

Fax : 1(USA)-607-255-1895

Homepage : <http://www.fisheries.org/afs/index.html/>

Roles of the supporting organizations are to promote the Symposium by putting the Symposium information on their newsletters, journals and periodical publications.



[SUPPORTING MEMBERS] (ALPHABETICAL ORDER OF THE LAST NAMES)

Dr José Aguilar-Manjarrez

Fishery Resources Officer, FAO, Via delle Terme di Caracalla, 00153 Rome, Italy
E-mail : Jose.AguilarManjarrez@fao.org
Phone : 39(Italy)-(0 for domestic)-6-570-55452
Fax : 39(Italy)-(0 for domestic)-6-570-53020
Home page : <http://www.fao.org/fishery/gisfish>

Dr Jarbas Bonetti

Federal University of Santa Catarina, Campus Universitario, Florianopolis-SC, 88040-900, Brazil
E-mail : bonetti@cfh.ufsc.br
Phone : 55(Brazil)-(0 for domestic)-48-3231-3400
Fax : 55(Brazil)-(0 for domestic)-48-3231-3434

Dr. Din Chen

Karl E. Peace Endowed Eminent Scholar Chair in Biostatistics
Professor, Jian-Ping Hsu College of Public Health, Georgia Southern Univ., Statesboro, GA 34060, USA
E-mail : dchen@georgiasouthern.edu

Dr. William L. Fisher

Unit Leader and Associate Professor
U. S. Geological Survey, New York Cooperative Fish and Wildlife Research Unit and
Department of Natural Resources, Cornell University, Ithaca, NY 14853, U.S.A.
E-mail : william.fisher@cornell.edu
Phone : 1(USA)-607-255-2839
Fax : 1(USA)-607-255-1895
Homepage : <http://www.dnr.cornell.edu/cals/dnr/research/fwres/index.cfm>

Mr Md. Zakir Hossain

Asian Institute of Technology (AIT), P.O. Box 4, Klong Luang, Pathumthani 12120, THAILAND
E-mail : Zakir.Hossain@ait.ac.th or zakirmh@gmail.com
Phone : 66(Thailand)-8-1694-0759

Dr Alessandro Gimona

Macaulay Institute, Craigiebuckler, Aberdeen, Scotland, U.K.
E-mail : a.gimona@macaulay.ac.uk
Phone : 44(UK)-(0 for domestic)-1224-876544
Fax : 44(UK)-(0 for domestic)-1224-295511

Dr James McDaid Kapetsky (ex-FAO GIS expert)

C-FAST, Inc. (Consultants in Fisheries and Aquaculture Sciences and Technologies),
109 Brookhaven Trail, Leland NC U.S.A.
E-mail : cfast@sigmaxi.net
Phone : 1(USA)-910-371-0012

Dr Geoff Meaden

Consultant: "Gorewell", Selling Road, Old Wives Lees, Canterbury, Kent, CT4 8BD, UK
E-mail : geoff.meaden@gmail.com
Phone : 44 (UK) - (0 for domestic) - 1227 - 752 275

Dr Francis Maduwuba NWOSU

Senior Research Fellow; Institute of Oceanography, University of Calabar, PMB 1115 Calabar, Nigeria
E-mail : fmnwosu@yahoo.com
Phone : 234(Nigeria)-803-835-5564

Dr Graham J. Pierce

Department of Zoology, University of Aberdeen, Tillydrone Avenue, Aberdeen AB24 2TZ, Scotland, U.K.
E-mail : g.j.pierce@abdn.ac.uk
Phone : 44(UK) -(0 for domestic)-1224-272459
Fax : 44(UK) -(0 for domestic)-1224-272396

Dr Naoki Tojo

Staff of Marino-Forum 21 (MF21)
Yusen-Okachimachi Bldg. 8F, 4-8-7, Taito, Taito-ku, Tokyo, 110-0016, JAPAN
E-mail : bering.raven@gmail.com
Phone : 81(Japan)-3-3837-5214
FAX : 81(Japan)-3-5817-3870

Mr Vasilis D. Valavanis

Marine GIS Laboratory (MGIS) PO BOX 2214, 71003, Iraklio, Crete, Greece
E-mail : vasilis@her.hcmr.gr
Phone : 30(Greece)-2810-337817
Fax : 30(Greece)-2810-337822
Homepage (M-GIS) : <http://arch.her.hcmr.gr/>

Other voluntary supporting members are welcome. Please contact the Convener.

Roles of the supporting members are to promote the Symposium, to assist preparation of the Symposium, to assist various matters during the Symposium and other related matters.

[FUTURE SYMPOSIA]

The International Fishery GIS Society organizes this type of Symposium every three years. The Fifth Symposium will therefore be held in 2014 and the venue will be determined in 2013.

[PUBLICATIONS]

Abstract Proceedings and Proceedings of the past Symposia (GIS/Spatial analyses in Fishery and Aquatic Sciences Volumes 1-4) are available. For details, refer to the web site: http://www.esl.co.jp/Sympo/publication_May_2010_.pdf/ or next page.



PUBLICATIONS FOR SALE (MARCH, 2011)

[For any purchase the cost of Surface/Sea mail & handling fees is included] (*)

- For the contents of Abstracts and Proceedings, please refer to <http://www.esl.co.jp/Sympo/cofpast/index.htm>.
- For book (Proceedings) reviews, please refer to <http://www.esl.co.jp/Sympo/bookrev/index.htm>

Symposium	code	Contents	Purchases by individuals (US\$)	Purchases by Library, Agency or Company (US\$)
First Symposium (NMFS, Seattle, USA, 1999)	(A)	Abstract Proceedings (132 papers)	30	40
	(B)	PROCEEDINGS (40 original articles) [GIS/Spatial analyses in Fishery and Aquatic Sciences (Vol. 1)]	80	100
	(C)	Package (special offer) [(A) + (B)]	90	110
	(C-DVD)	(C) all in DVD	60	80
	(D)	Individual reprints from (B)	2	4
Second Symposium (University of Sussex, Brighton, UK, 2002)	(E)	Abstract Proceedings (95 papers)	30	40
	(F)	PROCEEDINGS (46 original articles) [GIS/Spatial analyses in Fishery and Aquatic Sciences (Vol. 2)]	80	100
	(G)	PowerPoint files(61 papers) (one) CD-ROM	20	30
	(H)	572 digital symposium pictures (one) CD-ROM	20	30
	(I)	Package (special offer) [all items:(E) + (F) + (G) + (H)]	120	150
	(I-DVD)	(I) all in DVD	140	170
	(J)	Package (special offer) [(F) + (G) + (H)]	100	130
	(K)	Package(special offer) [(E) + (F)]	90	110
Third Symposium (Shanghai Fisheries University, China, 2005)	(L)	Individual reprints from (F)	2	4
	(M)	Abstract Proceedings (72 papers)	30	40
	(M2)	PROCEEDINGS (28 original articles) [GIS/Spatial analyses in Fishery and Aquatic Sciences (Vol. 3)]	80	100
	(N)	PowerPoint files(49 papers) (one) CD-ROM	20	30
	(O)	1,228 digital symposium pictures (two) CD-ROMs	20	30
	(P)	Package (special offer) [(M)+(N) + (O)]	50	70
	(Q)	Package (special offer) [(N) + (O)]	30	50
	(Q2)	Package (special offer) [all items: (M) +(M2)+ (N)+(O)]	120	150
	(Q2-DVD)	(Q2) all in DVD	140	170
Fourth Symposium (Universidade Santa Úrsula Rio de Janeiro, Brazil, 2008)	(Q3)	Package (special offer) [(M) +(M2)]	90	110
	(Q4)	Individual reprints from (M2)	2	4
	(S1)	Abstract Proceedings (95 papers)	30	40
	(S2)	PROCEEDINGS(35 articles) [GIS/Spatial analyses in Fishery and Aquatic Sciences (Vol. 4)]	80	100
	(S3)	PowerPoint files(83 papers) (one) CD-ROM	20	30
	(S4)	627 Digital symposium pictures (one) DVD	20	30
	(S5)	Package (special offer) [(S1)+ (S3) + (S4)]	50	70
	(S6)	Package (special offer) [(S3) + (S4)]	30	50
	(S7)	Package (special offer) [all items: (S1) +(S2)+ (S3)+(S4)]	120	150
(S7-DVD)	(S7) all in DVD	140	170	
Special issue (2005)	(S8)	Package (special offer) [(S1) +(S2)]	90	110
	(S9)	Individual reprints from (S2)	2	4
Special issue (2005)	(R)	Application of GIS and Remote Sensing Technologies in Inland Fisheries Management and Planning in Asia	30	40

- (*) For air mail (including the handling fee): add US\$ 30 for any amount the purchases.
- For surface/sea mail, it will take for 1-3 months to deliver & 1-2 weeks by air mail depending on the destination and the situations.

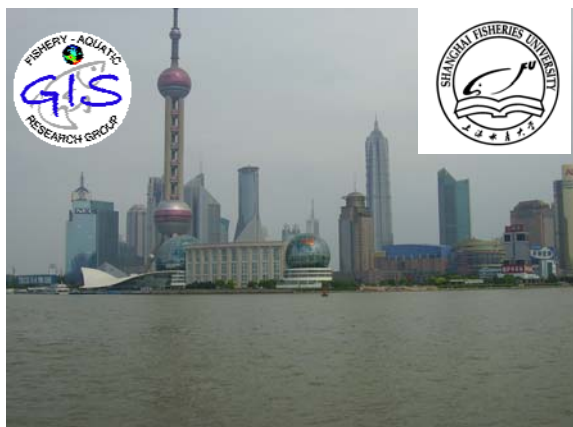
Methods of Payment: please follow the instruction stated on page 17.



1ST SYMPOSIUM (MARCH 2-4, 1999)
 VENUE: DOUBLE TREE HOTEL (SEATTLE/TACOMA AIRPORT)
 SEATTLE, WASHINGTON, USA
 CO-ORGANIZER: DR LOH-LEE LOW
 NATIONAL MARINE FISHERIES SERVICE (NMFS), NOAA



2ND SYMPOSIUM (SEPTEMBER 3-6, 2002)
 VENUE: UNIVERSITY OF SUSSEX
 BRIGHTON, UK
 CO-ORGANIZER: DR GEOFF MEADEN
 CANTERBURY CHRIST CHURCH UNIVERSITY



3RD SYMPOSIUM (AUGUST 22-26, 2005)
 VENUE: SHANGHAI FISHERIES UNIVERSITY
 SHANGHAI, CHINA
 CO-ORGANIZER: PROFESSOR LIU-XIONG XU (許柳雄 教授)



4TH SYMPOSIUM (AUGUST 25-29, 2008)
 VENUE: Universidade Santa Úrsula
 RIO DE JANEIRO, BRAZIL
 CO-ORGANIZER: DR PHILIP SCOTT



5TH SYMPOSIUM (AUGUST 22-26, 2011)
 VENUE: JAMES COOK HOTEL GRAND CHANCELLOR
 CO-ORGANIZER: MR BRENT WOOD AND MS FRANCES NOLAN
 NATIONAL INSTITUTE OF WATER AND ATMOSPHERIC RESEARCH (NIWA) AND SILVERSTRIPE.

Blank page

Please detach this page and keep it with you.

[CONTACT POINTS AND DIRECTIONS]

Mr. Brent Wood

National Institute of Water and Atmospheric Research (NIWA) Ltd
Private Bag 14901, Kilbirnie, Wellington, New Zealand

Email: b.wood@niwa.co.nz

Phone :+64 (NZ) (4) 386-0300 (from within NZ: 04 386-0300)

Fax :+64 (NZ) (4) 386-0574 (from within NZ: 04 386-0574)

Ms Frances Nolan

National Institute of Water and Atmospheric Research (NIWA) Ltd
Private Bag 14901, Kilbirnie, Wellington, New Zealand

Email: f.nolan@niwa.co.nz

Phone :+64 (NZ) (4) 386-0527 (from within NZ: 04 386-0527)

Fax :+64 (NZ) (4) 386-0574 (from within NZ: 04 386-0574)

How to get to the city from the airport

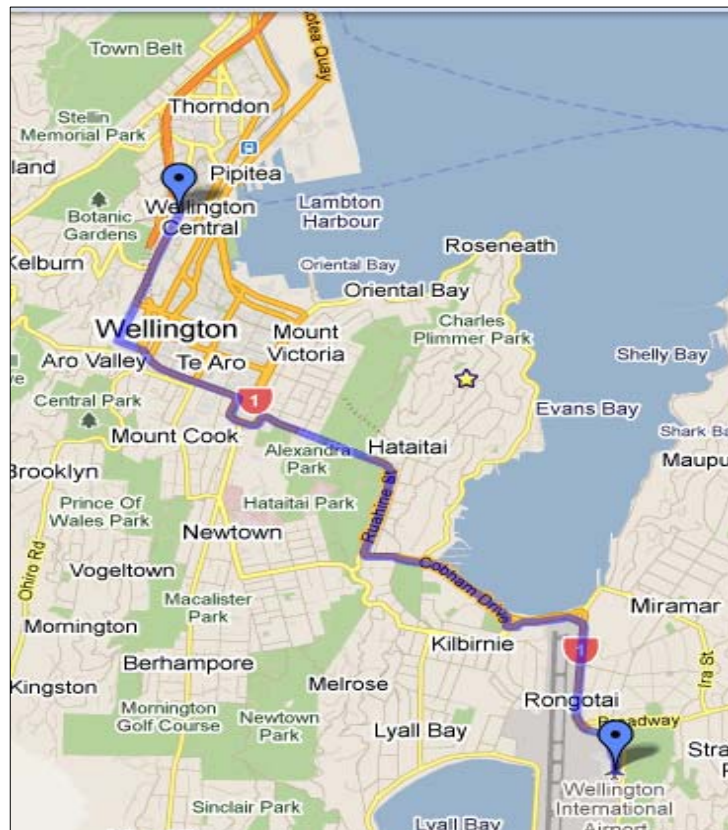
Wellington Airport is a fifteen minute drive from the central city. You can get into the city by:

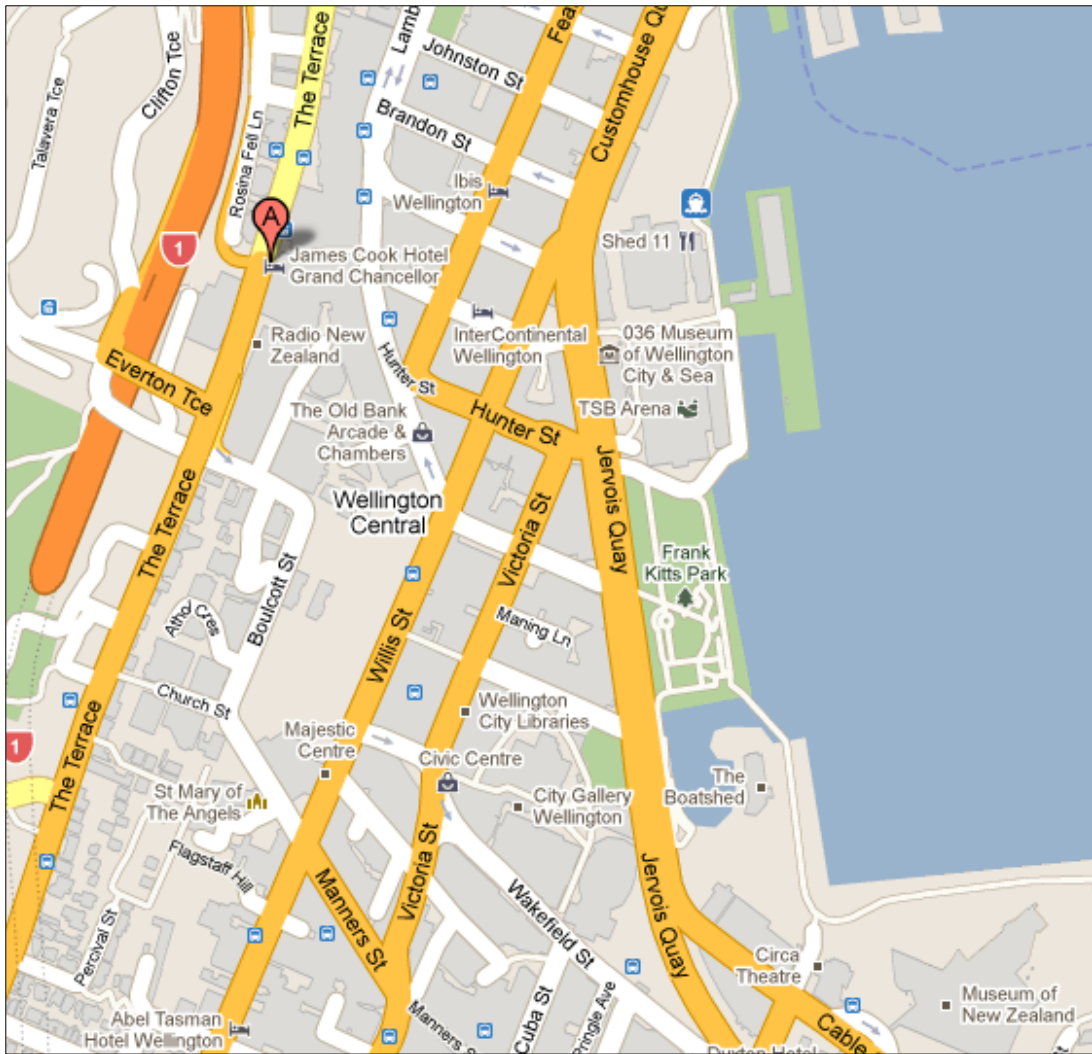
1. Airport Flyer Bus
Departs every 15 minutes from 6.30am to 9.30pm
Approximate cost to the central city is \$7.50
2. Taxi
Approximate fare to the Hotel is \$30 - \$35.
3. Door to Door Shuttles
Approximate fare to the Hotel for one passenger is \$18. If travelling in a group, it is only \$6 for additional passengers.

These services can be found at the airport, on level 0 opposite the luggage collection area.

[MAP OF WELLINGTON, THE AIRPORT, THE VENUE & HOTELS]

Map showing
the drive from
the Airport to
City Centre





Wellington central city map

The venue is located in the central city (marked A), it is an easy walk down to the harbour into the shopping precinct and along to bars and restaurants.

A map of the central city highlighting interesting sites, events, restaurants, café's,

Accommodation etc is available from

http://www.wellingtonnz.com/visitor_information/essentials/maps_guides

under 'Downtown Wellington Map'

For further information about Wellington city

please see <http://www.wellingtonnz.com/>